

# 通告

现将临桂区大江、小江水库部分土地情况通告如下：

土地权属为国有土地，宗地面积为 18864.96 平方米，宗地四至详见附图。

如有异议，请于 2023 年 7 月 1 日前书面反馈桂林市临桂区自然资源局。逾期视为无异议。

特此通告



红线范围内土地面积为3496.1平方米 合5.2442亩

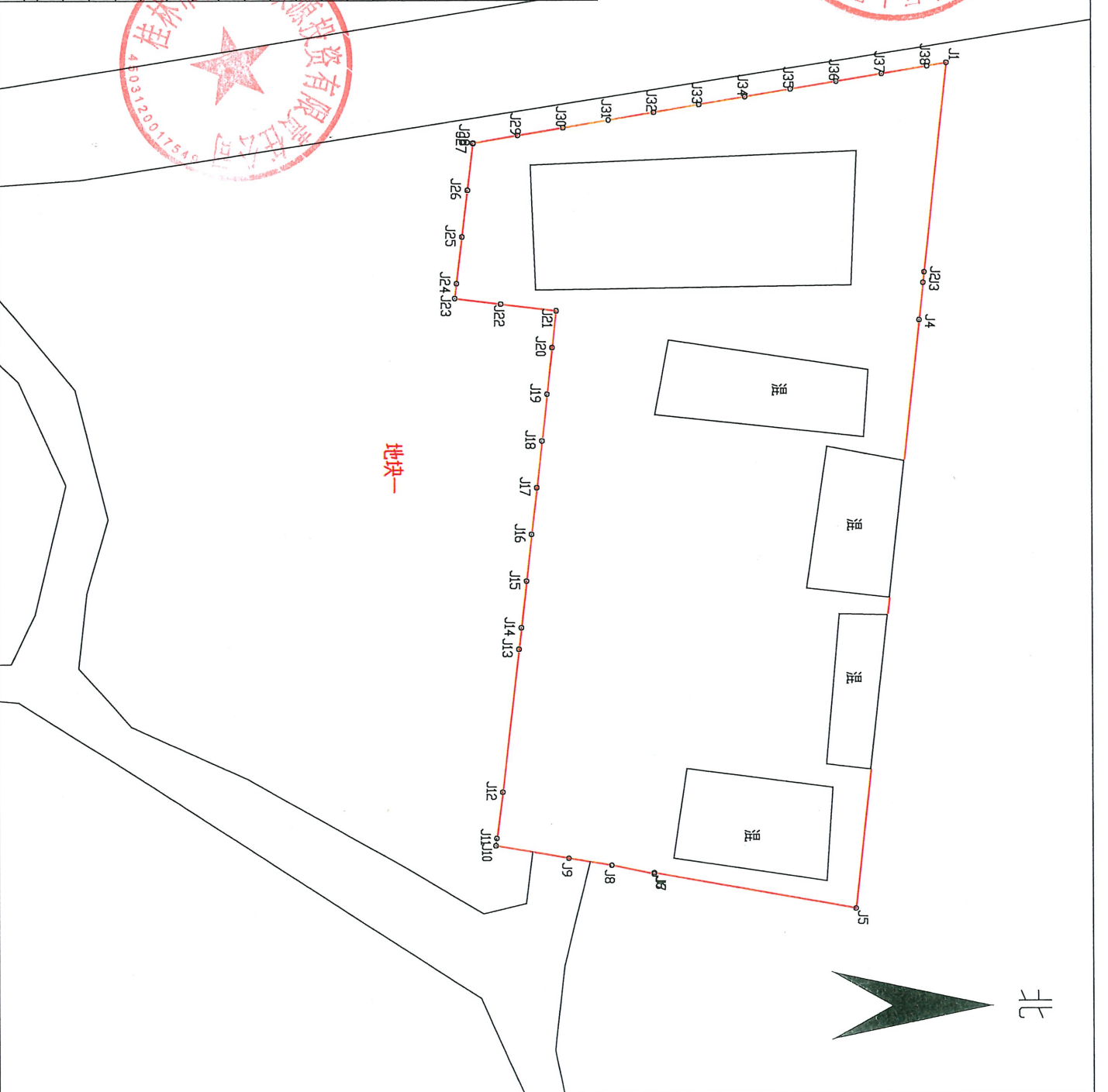


界址点坐标表

界址点坐标表

点号	X	Y	边长	点号	X	Y	边长
J1	2773147.464	37418860.723	22.41	J20	2773104.607	37418890.953	3.95
J2	2773144.961	37418882.997	1.12	J21	2773105.055	37418887.033	6.05
J3	2773144.836	37418884.114	4	J22	2773099.044	37418886.3	5
J4	2773144.389	37418888.091	63.15	J23	2773094.081	37418885.684	1.59
J5	2773137.338	37418950.846	22.13	J24	2773094.268	37418884.113	5
J6	2773115.552	37418946.97	0.13	J25	2773094.856	37418879.147	5
J7	2773115.527	37418947.093	4.69	J26	2773095.444	37418874.182	5
J8	2773110.932	37418946.147	4.71	J27	2773096.031	37418869.217	0.07
J9	2773106.284	37418945.38	8.02	J28	2773096.04	37418869.144	4.93
J10	2773098.383	37418944.023	0.79	J29	2773100.902	37418868.348	5
J11	2773098.487	37418943.235	5	J30	2773105.836	37418867.54	5
J12	2773099.142	37418938.278	15.35	J31	2773110.771	37418866.732	5
J13	2773100.941	37418923.036	2.29	J32	2773115.705	37418865.924	5
J14	2773101.201	37418920.759	5	J33	2773120.639	37418865.116	5
J15	2773101.769	37418915.791	5	J34	2773125.573	37418864.308	5
J16	2773102.336	37418910.824	5	J35	2773130.508	37418863.5	5
J17	2773102.904	37418905.856	5	J36	2773135.442	37418862.692	5
J18	2773103.472	37418900.888	5	J37	2773140.376	37418861.884	5
J19	2773104.039	37418895.921	5	J38	2773145.311	37418861.076	2.18
J20	2773104.607	37418890.953	5	J1	2773147.464	37418860.723	2.18

S=3496.1平方米 合5.2442亩

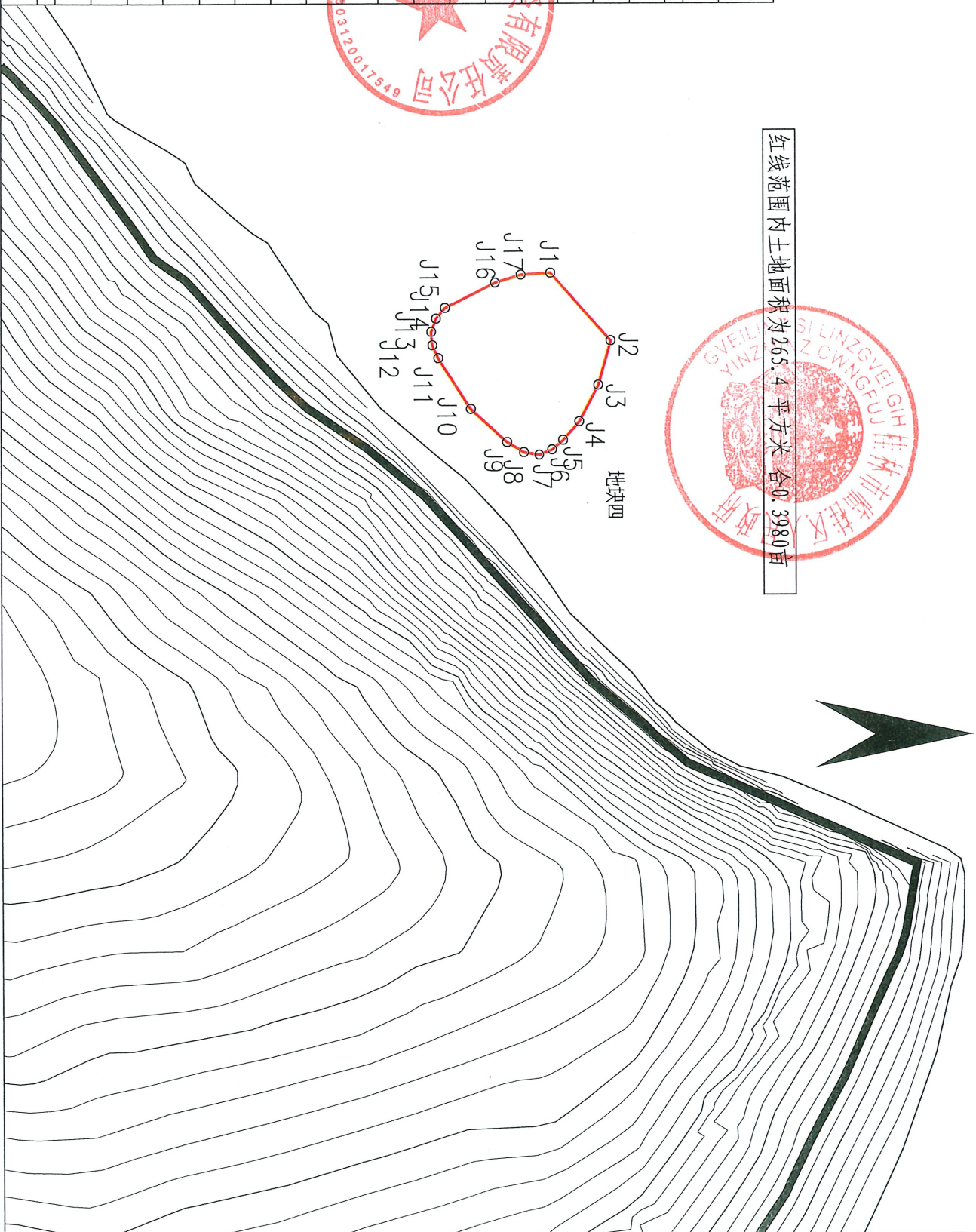


界址点坐标表

点号	X	Y	边长
J1	2762571.241	37423376.715	10.00
J2	2762577.964	37423384.117	5.04
J3	2762576.584	37423388.968	4.53
J4	2762574.452	37423392.962	2.72
J5	2762572.627	37423394.985	1.61
J6	2762571.391	37423396.022	1.57
J7	2762569.931	37423396.598	1.71
J8	2762568.248	37423396.320	2.17
J9	2762566.381	37423395.204	5.43
J10	2762562.342	37423391.569	6.62
J11	2762558.755	37423386.001	1.56
J12	2762558.102	37423384.587	1.47
J13	2762557.964	37423383.124	1.55
J14	2762558.496	37423381.673	1.54
J15	2762559.507	37423380.507	6.20
J16	2762565.069	37423377.772	2.99
J17	2762567.937	37423376.912	3.31
J1	2762571.241	37423376.715	

S=265.4 平方米 合0.3980亩

红线范围内土地面积为265.4平方米 合0.3980亩



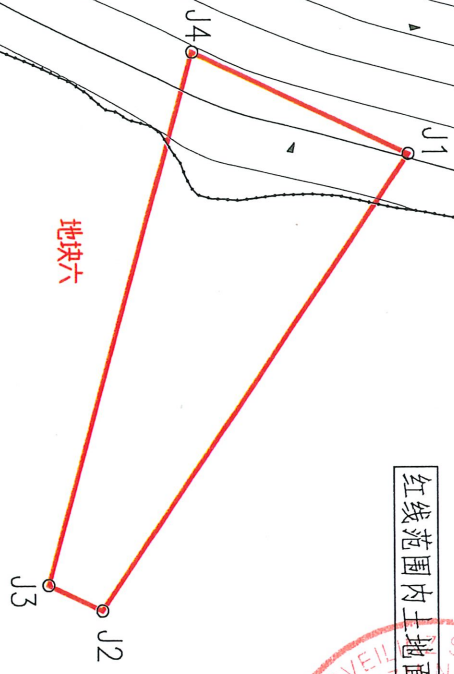
地块四





红线范围内土地面积为562.5平方米合0.8437亩

地块六



界址点坐标表

点号	X	Y	边长
J1	2762318.226	37423784.099	45.62
J2	2762292.381	37423821.693	5.00
J3	2762287.851	37423819.576	45.62
J4	2762300.106	37423775.632	20.00
J1	2762318.226	37423784.099	

S=562.5 平方米 合0.8437亩



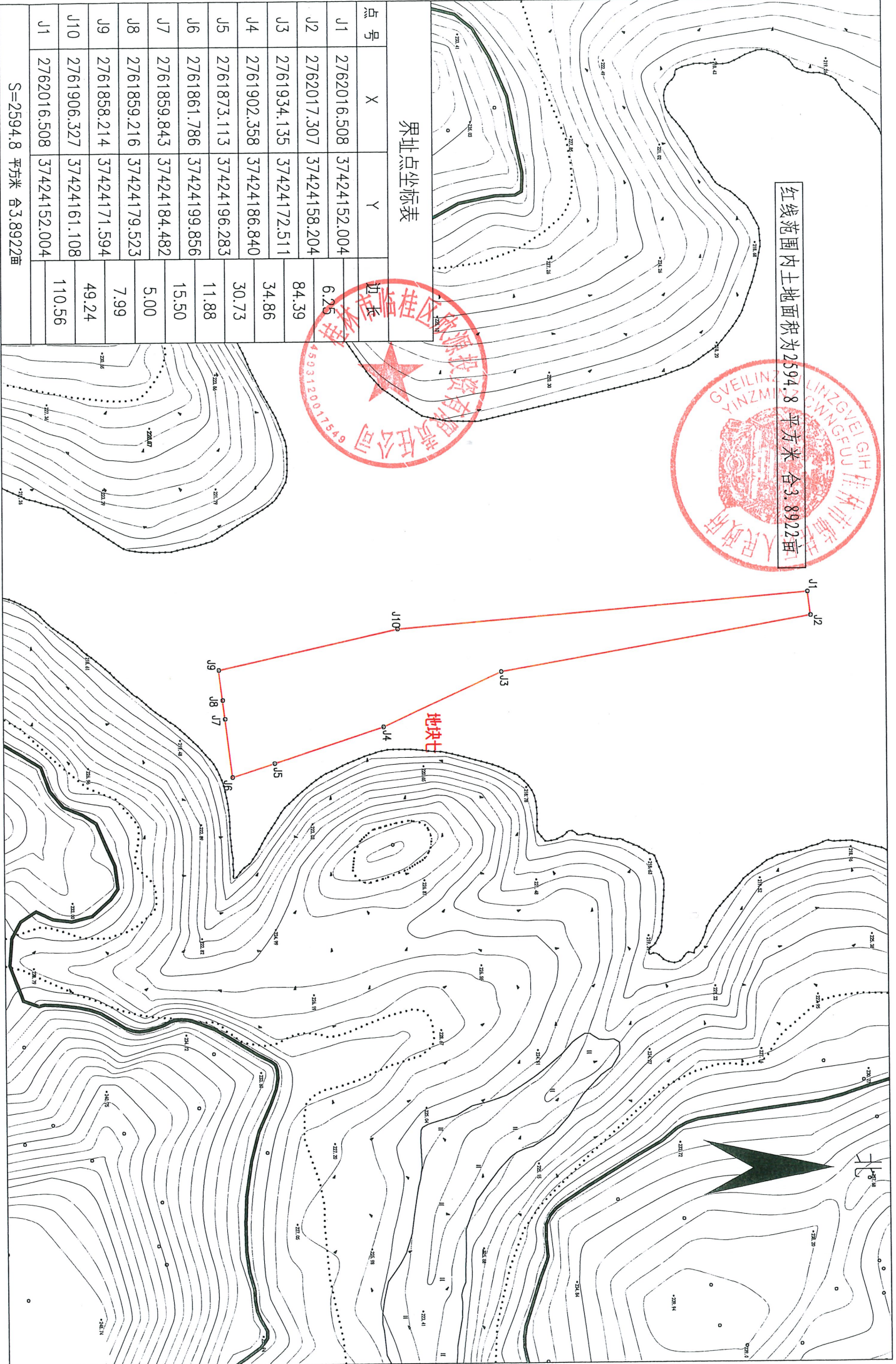


红线范围内土地面积为2594.8平方米 合3.8922亩



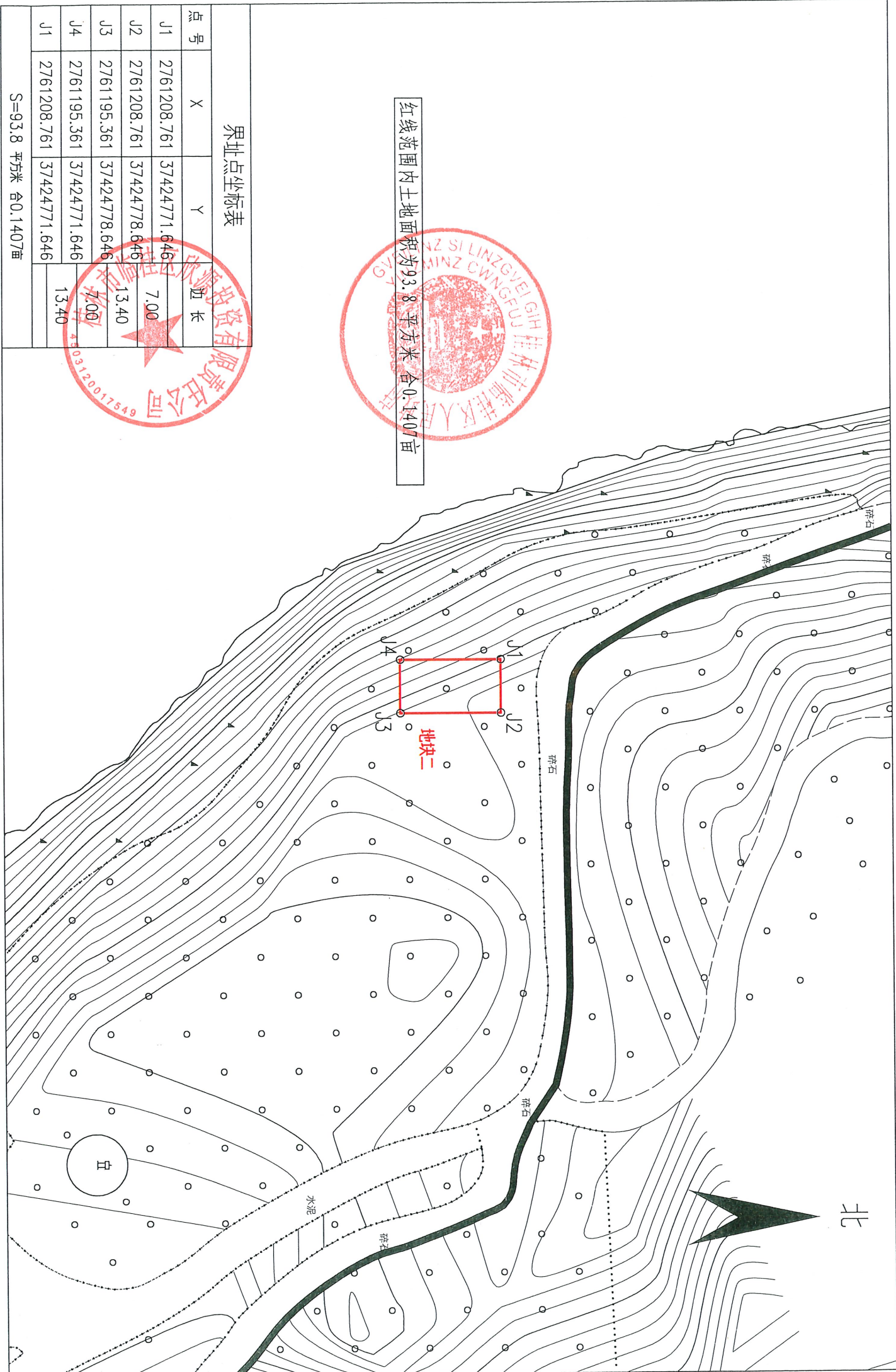
界址点坐标表

点号	X	Y	边长
J1	2762016.508	37424152.004	6.25
J2	2762017.307	37424158.204	84.39
J3	2761934.135	37424172.511	34.86
J4	2761902.358	37424186.840	30.73
J5	2761873.113	37424196.283	11.88
J6	2761861.786	37424199.856	15.50
J7	2761859.843	37424184.482	5.00
J8	2761859.216	37424179.523	7.99
J9	2761858.214	37424171.594	49.24
J10	2761906.327	37424161.108	110.56
J1	2762016.508	37424152.004	



S=2594.8 平方米 合3.8922亩



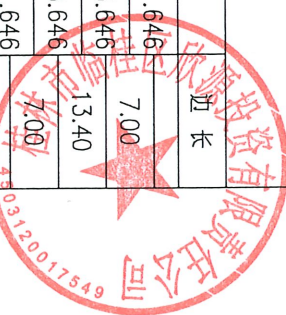


红线范围内土地面积为93.8平方米 合0.1407亩

界址点坐标表

点号	X	Y	边长
J1	2761208.761	37424771.646	7.00
J2	2761208.761	37424778.646	13.40
J3	2761195.361	37424778.646	7.00
J4	2761195.361	37424771.646	13.40
J1	2761208.761	37424771.646	13.40

S=93.8 平方米 合0.1407亩



北



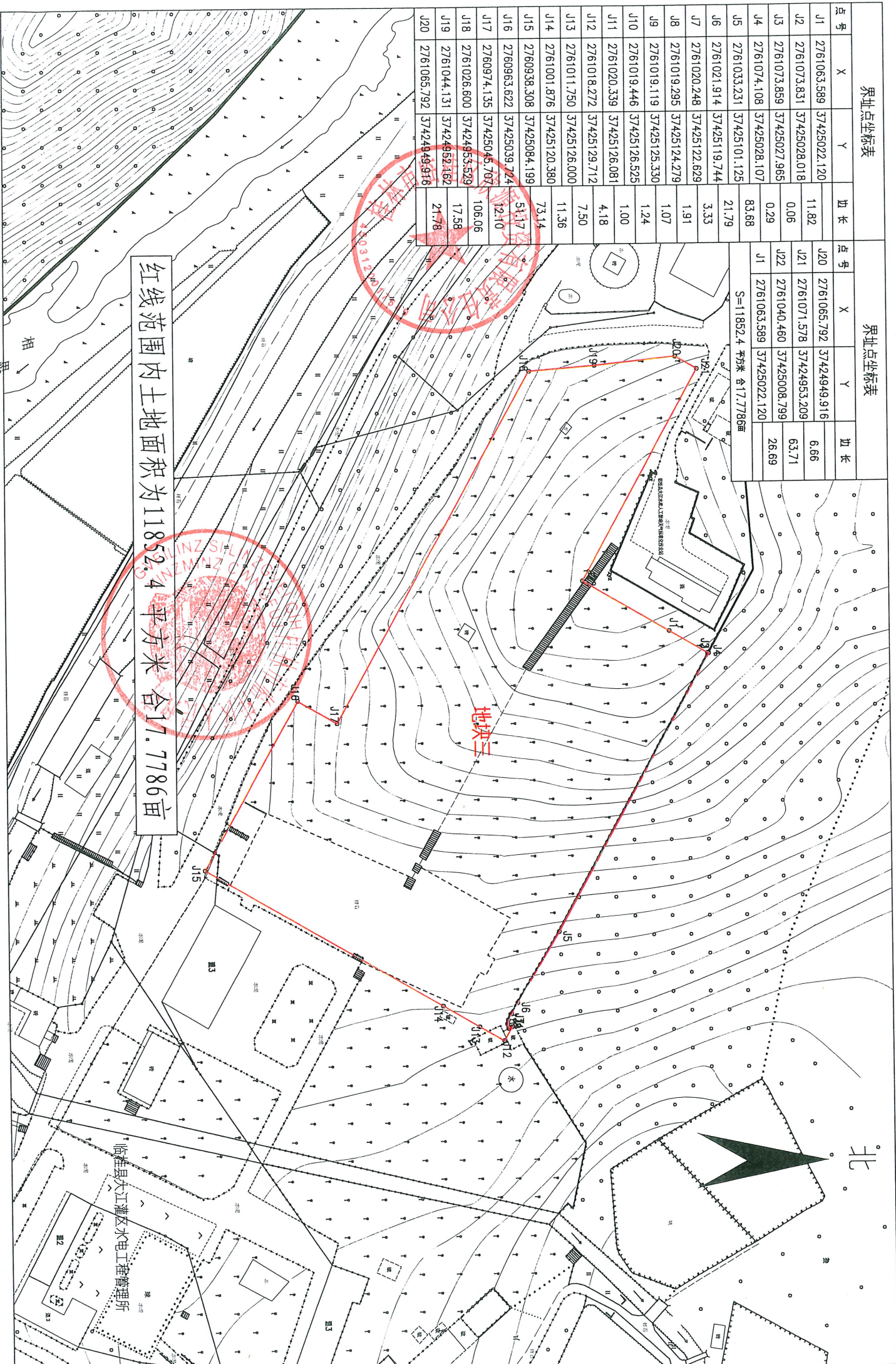
界址点坐标表

点号	X	Y	边长
J1	2761063.589	37425022.120	11.82
J2	2761073.831	37425028.018	0.06
J3	2761073.859	37425027.965	0.29
J4	2761074.108	37425028.107	83.68
J5	2761033.231	37425101.125	21.79
J6	2761021.914	37425119.744	3.33
J7	2761020.248	37425122.629	1.91
J8	2761019.295	37425124.279	1.07
J9	2761019.119	37425125.330	1.24
J10	2761019.446	37425126.525	1.00
J11	2761020.339	37425126.081	4.18
J12	2761018.272	37425129.712	7.50
J13	2761011.750	37425126.000	11.36
J14	2761001.876	37425120.380	73.14
J15	2760938.308	37425084.199	51.17
J16	2760963.622	37425039.724	12.10
J17	2760974.135	37425045.707	106.06
J18	2761026.600	37424853.529	17.58
J19	2761044.131	37424852.162	21.78
J20	2761065.792	37424849.916	

界址点坐标表

点号	X	Y	边长
J20	2761065.792	37424849.916	6.66
J21	2761071.578	37424953.209	63.71
J22	2761040.460	37425008.799	26.69
J1	2761063.589	37425022.120	

S=11852.4 平方米 合17.7786亩



红线范围内土地面积为11852.4平方米合17.7786亩