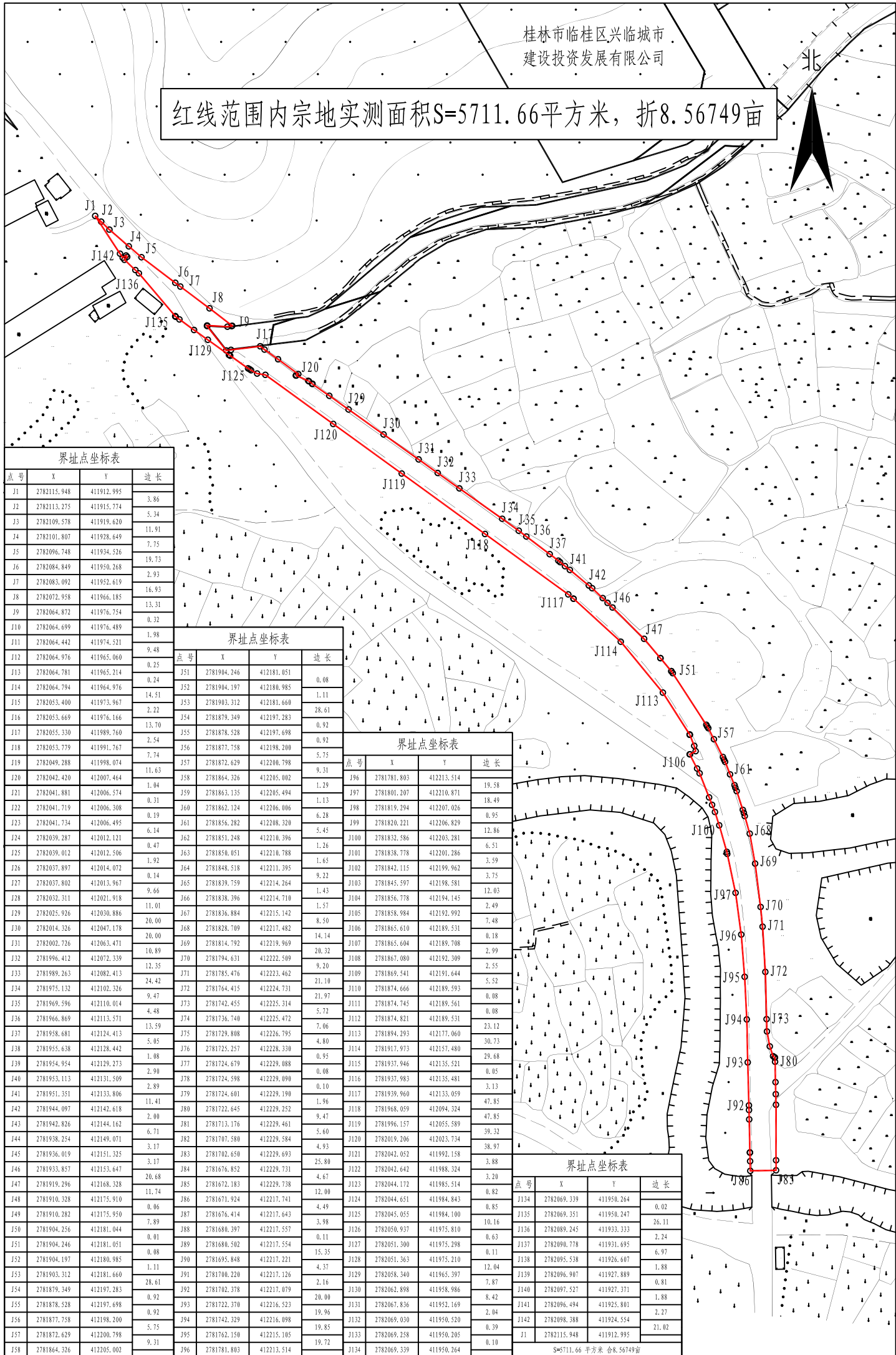




红线范围内宗地实测面积S=5711.66平方米，折8.56749亩



点号	X	Y	边长
J1	2782115.948	411912.995	
J2	2782113.275	411915.774	3.86
J3	2782109.578	411919.620	5.34
J4	2782101.807	411928.649	11.91
J5	2782096.748	411934.526	7.75
J6	2782084.849	411950.268	19.73
J7	2782083.092	411952.619	2.93
J8	2782072.958	411966.185	16.93
J9	2782064.872	411976.754	13.31
J10	2782064.699	411976.489	0.32
J11	2782064.442	411974.521	1.98
J12	2782064.976	411965.060	9.48
J13	2782064.781	411965.214	0.25
J14	2782064.794	411964.976	0.24
J15	2782053.400	411973.967	14.51
J16	2782053.669	411976.166	2.22
J17	2782055.330	411989.760	13.70
J18	2782053.779	411991.767	2.54
J19	2782049.288	411998.074	7.74
J20	2782042.420	412007.464	11.63
J21	2782041.881	412006.574	1.04
J22	2782041.719	412006.308	0.31
J23	2782041.734	412006.495	0.19
J24	2782039.287	412012.121	6.14
J25	2782039.012	412012.506	0.47
J26	2782037.897	412014.072	1.92
J27	2782037.802	412013.967	0.14
J28	2782032.311	412021.918	9.66
J29	2782025.966	412030.886	11.01
J30	2782014.326	412047.178	20.00
J31	2782002.726	412063.471	10.89
J32	2781996.412	412072.339	12.35
J33	2781989.263	412082.413	24.42
J34	2781975.132	412102.326	9.47
J35	2781969.596	412110.014	4.48
J36	2781966.869	412113.571	13.59
J37	2781958.681	412124.413	5.05
J38	2781955.638	412128.442	1.08
J39	2781954.954	412129.273	2.90
J40	2781953.113	412131.509	2.89
J41	2781951.351	412133.806	11.41
J42	2781944.097	412142.618	2.00
J43	2781942.826	412144.162	6.71
J44	2781938.254	412149.071	3.17
J45	2781936.019	412151.325	3.17
J46	2781933.857	412153.647	20.68
J47	2781919.296	412168.328	11.74
J48	2781910.328	412175.910	0.06
J49	2781910.282	412175.950	7.89
J50	2781904.236	412181.044	0.01
J51	2781904.246	412181.051	0.08
J52	2781904.197	412180.985	1.11
J53	2781903.312	412181.660	28.61
J54	2781879.349	412197.283	0.92
J55	2781878.528	412197.698	0.92
J56	2781877.758	412198.200	5.75
J57	2781872.629	412200.798	9.31
J58	2781864.326	412205.002	1.29
J59	2781863.135	412205.494	1.13
J60	2781862.124	412206.006	6.28
J61	2781856.282	412208.320	5.45
J62	2781851.248	412210.396	1.26
J63	2781850.051	412210.788	1.63
J64	2781848.518	412211.395	9.22
J65	2781839.759	412214.264	1.43
J66	2781838.396	412214.710	1.57
J67	2781836.884	412215.142	8.50
J68	2781828.709	412217.482	14.14
J69	2781814.792	412219.969	20.32
J70	2781794.631	412222.509	9.20
J71	2781785.476	412223.462	21.10
J72	2781764.415	412224.731	21.97
J73	2781742.455	412225.314	5.72
J74	2781736.740	412225.472	7.06
J75	2781729.808	412226.795	4.80
J76	2781725.257	412228.330	0.95
J77	2781724.679	412229.088	0.08
J78	2781724.598	412229.090	0.10
J79	2781724.601	412229.190	1.96
J80	2781722.645	412229.252	9.47
J81	2781713.176	412229.461	5.60
J82	2781707.580	412229.584	4.93
J83	2781702.650	412229.693	25.80
J84	2781676.852	412229.731	4.67
J85	2781672.183	412229.738	12.00
J86	2781671.924	412227.741	4.49
J87	2781676.414	412217.643	3.98
J88	2781680.397	412217.557	0.11
J89	2781680.502	412217.554	15.35
J90	2781695.848	412217.221	4.37
J91	2781700.220	412217.126	2.16
J92	2781702.378	412217.079	20.00
J93	2781722.370	412216.523	19.96
J94	2781742.329	412216.098	19.85
J95	2781762.150	412215.105	19.72
J96	2781781.803	412213.514	

点号	X	Y	边长
J51	2781904.246	412181.051	0.08
J52	2781904.197	412180.985	1.11
J53	2781903.312	412181.660	28.61
J54	2781879.349	412197.283	0.92
J55	2781878.528	412197.698	0.92
J56	2781877.758	412198.200	5.75
J57	2781872.629	412200.798	9.31
J58	2781864.326	412205.002	1.29
J59	2781863.135	412205.494	1.13
J60	2781862.124	412206.006	6.28
J61	2781856.282	412208.320	5.45
J62	2781851.248	412210.396	1.26
J63	2781850.051	412210.788	1.63
J64	2781848.518	412211.395	9.22
J65	2781839.759	412214.264	1.43
J66	2781838.396	412214.710	1.57
J67	2781836.884	412215.142	8.50
J68	2781828.709	412217.482	14.14
J69	2781814.792	412219.969	20.32
J70	2781794.631	412222.509	9.20
J71	2781785.476	412223.462	21.10
J72	2781764.415	412224.731	21.97
J73	2781742.455	412225.314	5.72
J74	2781736.740	412225.472	7.06
J75	2781729.808	412226.795	4.80
J76	2781725.257	412228.330	0.95
J77	2781724.679	412229.088	0.08
J78	2781724.598	412229.090	0.10
J79	2781724.601	412229.190	1.96
J80	2781722.645	412229.252	9.47
J81	2781713.176	412229.461	5.60
J82	2781707.580	412229.584	4.93
J83	2781702.650	412229.693	25.80
J84	2781676.852	412229.731	4.67
J85	2781672.183	412229.738	12.00
J86	2781671.924	412227.741	4.49
J87	2781676.414	412217.643	3.98
J88	2781680.397	412217.557	0.11
J89	2781680.502	412217.554	15.35
J90	2781695.848	412217.221	4.37
J91	2781700.220	412217.126	2.16
J92	2781702.378	412217.079	20.00
J93	2781722.370	412216.523	19.96
J94	2781742.329	412216.098	19.85
J95	2781762.150	412215.105	19.72
J96	2781781.803	412213.514	

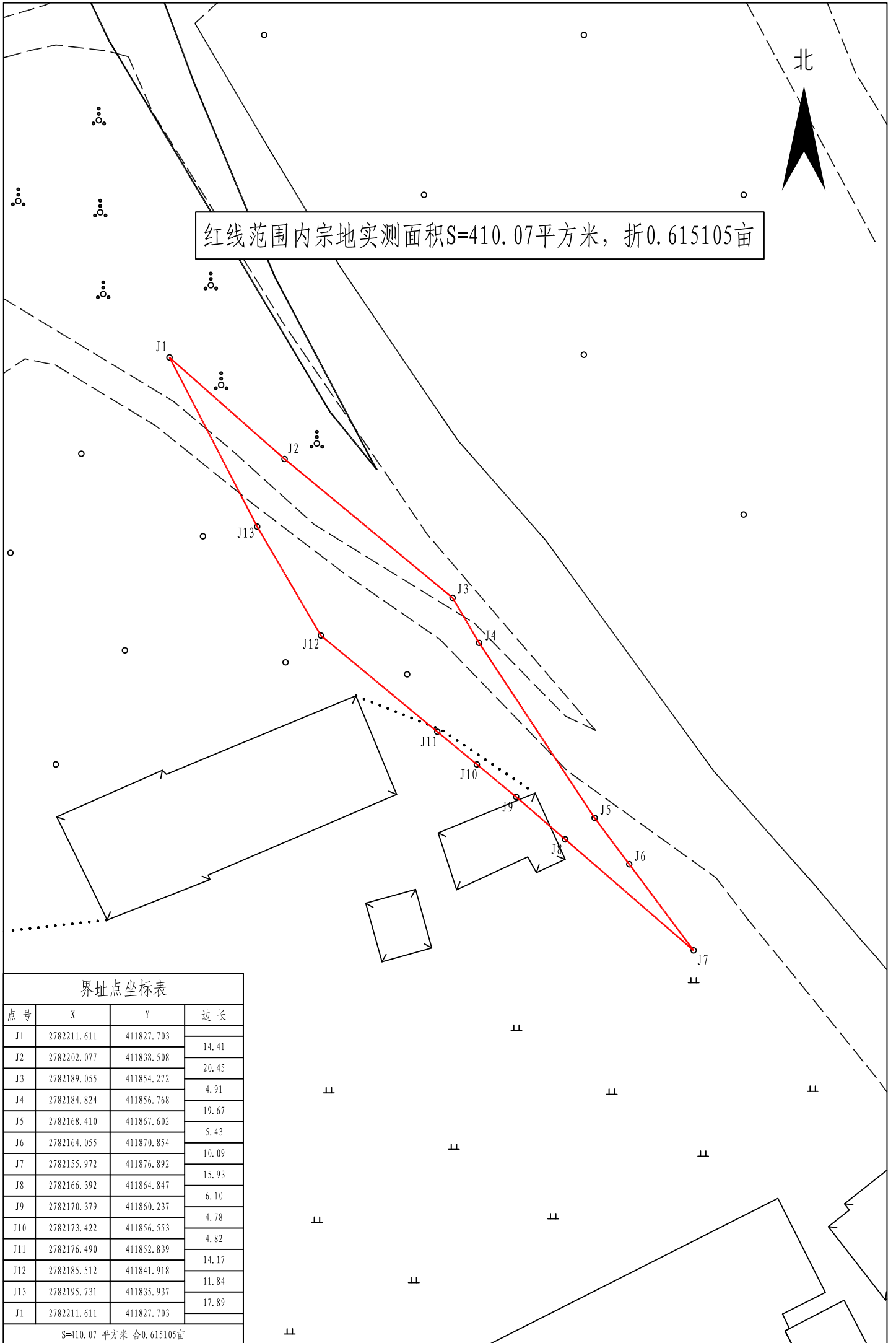
点号	X	Y	边长
J96	2781781.803	412213.514	19.58
J97	2781801.207	412210.871	18.49
J98	2781819.294	412207.026	0.95
J99	2781820.221	412206.829	12.86
J100	2781832.586	412203.281	6.51
J101	2781838.396	412201.286	3.59
J102	2781842.115	412199.962	3.75
J103	2781845.597	412198.581	12.03
J104	2781856.778	412194.145	2.49
J105	2781858.293	412192.992	7.48
J106	2781865.610	412189.531	0.18
J107	2781865.604	412189.708	2.99
J108	2781867.080	412192.309	2.55
J109	2781869.951	412191.644	5.52
J110	2781874.666	412189.593	0.08
J111	2781874.745	412189.561	0.08
J112	2781874.821	412189.531	23.12
J113	2781894.893	412177.060	30.73
J114	2781917.973	412157.480	29.68
J115	2781937.946	412135.521	0.05
J116	2781937.983	412135.481	3.13
J117	2781939.960	412133.059	47.85
J118	2781968.059	412094.324	47.85
J119	2781996.157	412055.589	39.32
J120	2782019.206	412023.734	38.97
J121	2782042.642	411992.158	3.88
J122	2782042.642	411988.324	3.20
J123	2782044.172	411985.514	0.82
J124	2782044.651	411984.843	0.85
J125	2782045.055	411984.100	10.16
J126	2782050.937	411975.810	0.63
J127	2782051.300	411975.298	0.11
J128	2782051.363	411975.210	12.04
J129	2782058.340	411965.397	7.87
J130	2782062.898	411958.986	8.42
J131	2782067.836	411952.169	2.04
J132	2782069.030	411950.520	0.39
J133	2782069.258	411950.205	0.10
J134	2782069.339	411950.264	

点号	X	Y	边长
J134	2782069.339	411950.264	0.02
J135	2782069.351	411950.247	26.11
J136	2782089.245	411933.333	2.24
J137	2782090.778	411931.695	6.97
J138	2782095.538	411926.607	1.88
J139	2782096.907	411927.889	0.81
J140	2782097.527	411927.371	1.88
J141	2782096.494	411925.801	2.27
J142	2782098.388	411924.554	21.02
J1	2782115.948	411912.995	

S=5711.66 平方米 合8.56749亩

北

红线范围内宗地实测面积S=410.07平方米，折0.615105亩



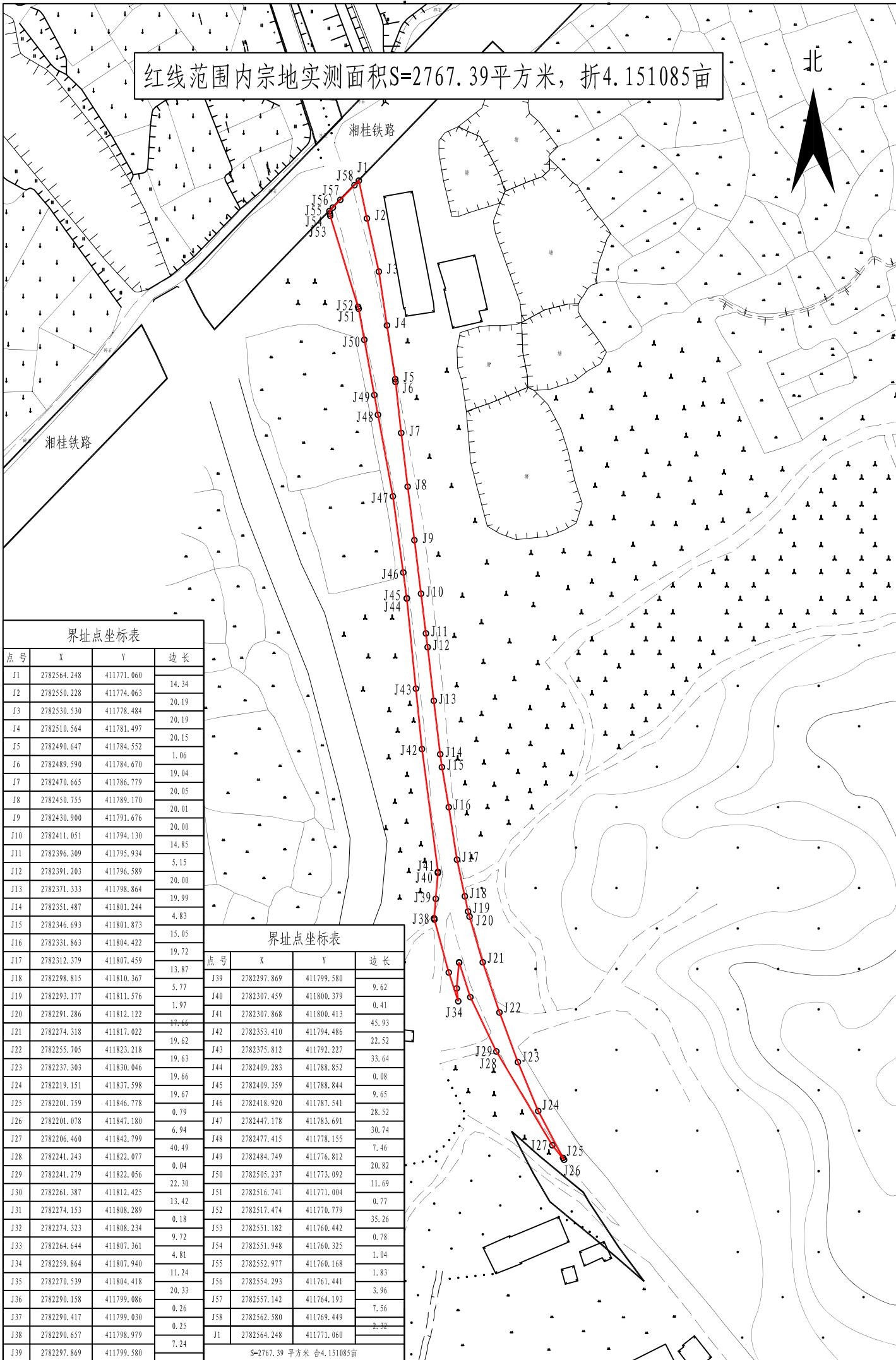
界址点坐标表

点号	X	Y	边长
J1	2782211.611	411827.703	
J2	2782202.077	411838.508	14.41
J3	2782189.055	411854.272	20.45
J4	2782184.824	411856.768	4.91
J5	2782168.410	411867.602	19.67
J6	2782164.055	411870.854	5.43
J7	2782155.972	411876.892	10.09
J8	2782166.392	411864.847	15.93
J9	2782170.379	411860.237	6.10
J10	2782173.422	411856.553	4.78
J11	2782176.490	411852.839	4.82
J12	2782185.512	411841.918	14.17
J13	2782195.731	411835.937	11.84
J1	2782211.611	411827.703	17.89

S=410.07 平方米 合0.615105亩

红线范围内宗地实测面积S=2767.39平方米，折4.151085亩

北



界址点坐标表

点号	X	Y	边长
J1	2782564.248	411771.060	14.34
J2	2782550.228	411774.063	20.19
J3	2782530.530	411778.484	20.19
J4	2782510.564	411781.497	20.15
J5	2782490.647	411784.552	1.06
J6	2782489.590	411784.670	19.04
J7	2782470.665	411786.779	20.05
J8	2782450.755	411789.170	20.01
J9	2782430.900	411791.676	20.00
J10	2782411.051	411794.130	14.85
J11	2782396.309	411795.934	5.15
J12	2782391.203	411796.589	20.00
J13	2782371.333	411798.864	19.99
J14	2782351.487	411801.244	4.83
J15	2782346.693	411801.873	15.05
J16	2782331.863	411804.422	19.72
J17	2782312.379	411807.459	13.87
J18	2782298.815	411810.367	5.77
J19	2782293.177	411811.576	1.97
J20	2782291.286	411812.122	17.66
J21	2782274.318	411817.022	19.62
J22	2782255.705	411823.218	19.63
J23	2782237.303	411830.046	19.66
J24	2782219.151	411837.598	19.67
J25	2782201.759	411846.678	0.79
J26	2782201.078	411847.180	6.94
J27	2782206.460	411842.799	40.49
J28	2782241.243	411822.077	0.04
J29	2782241.279	411822.056	22.30
J30	2782261.387	411812.425	13.42
J31	2782274.153	411808.289	0.18
J32	2782274.323	411808.234	9.72
J33	2782264.644	411807.361	4.81
J34	2782259.864	411807.940	11.24
J35	2782270.539	411804.418	20.33
J36	2782290.158	411799.086	0.26
J37	2782290.417	411799.030	0.25
J38	2782290.657	411798.979	7.24
J39	2782297.869	411799.580	

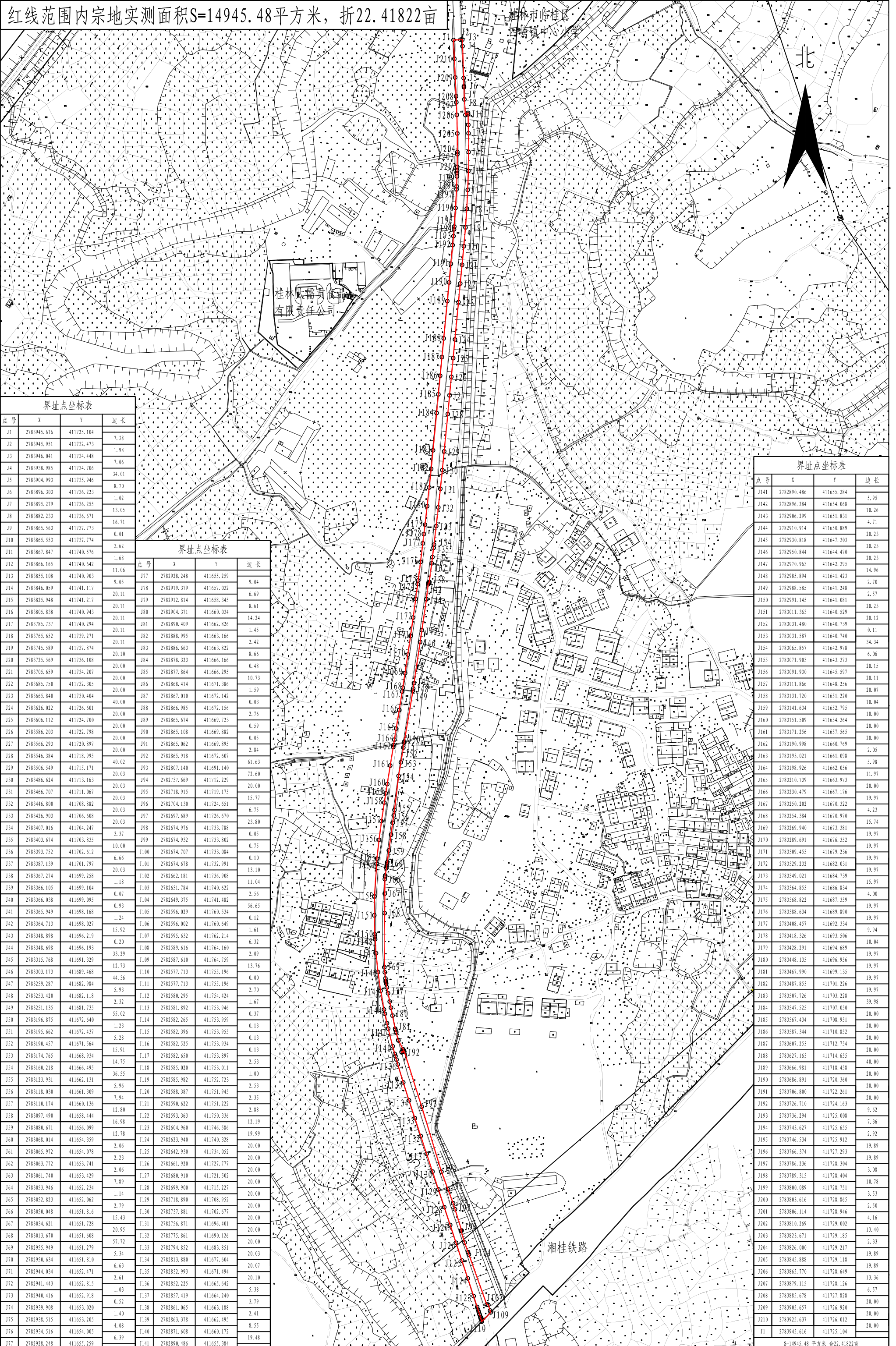
界址点坐标表

点号	X	Y	边长
J39	2782297.869	411799.580	9.62
J40	2782307.459	411800.379	0.41
J41	2782307.868	411800.413	45.93
J42	2782353.410	411794.486	22.52
J43	2782375.812	411792.227	33.64
J44	2782409.283	411788.852	0.08
J45	2782409.359	411788.844	9.65
J46	2782418.920	411787.541	28.52
J47	2782447.178	411783.691	30.74
J48	2782477.415	411778.155	7.46
J49	2782484.749	411776.812	20.82
J50	2782505.237	411773.092	11.69
J51	2782516.741	411771.004	0.77
J52	2782517.474	411770.779	35.26
J53	2782551.182	411760.442	0.78
J54	2782551.948	411760.325	1.04
J55	2782552.977	411760.168	1.83
J56	2782554.293	411761.441	3.96
J57	2782557.142	411764.193	7.56
J58	2782562.580	411769.449	2.32
J1	2782564.248	411771.060	

S=2767.39 平方米 合4.151085亩



红线范围内宗地实测面积S=14945.48平方米，折22.41822亩



界址点坐标表

点号	X	Y	边长
J1	2783945.616	411725.104	7.38
J2	2783945.951	411732.473	1.98
J3	2783946.041	411734.448	7.06
J4	2783938.985	411734.706	34.01
J5	2783904.993	411735.946	8.70
J6	2783896.303	411736.223	1.02
J7	2783895.279	411736.255	13.05
J8	2783882.233	411736.671	16.71
J9	2783865.563	411737.773	0.01
J10	2783865.553	411737.774	3.62

界址点坐标表

点号	X	Y	边长
J11	2783867.847	411740.576	1.68
J12	2783866.165	411740.642	11.06
J13	2783855.108	411740.903	9.05
J14	2783846.059	411741.117	20.11
J15	2783825.948	411741.217	20.11
J16	2783805.838	411740.943	20.11
J17	2783785.737	411740.294	20.11
J18	2783765.652	411739.271	20.11
J19	2783745.589	411737.874	20.10
J20	2783725.569	411736.108	20.00
J21	2783705.659	411734.207	20.00
J22	2783685.750	411732.305	20.00
J23	2783665.840	411730.404	40.00
J24	2783626.022	411726.601	20.00
J25	2783606.112	411724.700	20.00
J26	2783586.203	411722.798	20.00
J27	2783566.293	411720.897	20.00
J28	2783546.384	411718.995	20.00
J29	2783506.549	411715.171	40.02
J30	2783486.624	411713.163	20.03
J31	2783466.707	411711.067	20.03
J32	2783446.800	411708.882	20.03
J33	2783426.903	411706.608	20.03
J34	2783407.016	411704.247	3.37
J35	2783403.674	411703.835	10.00
J36	2783393.752	411702.612	6.66
J37	2783387.139	411701.797	20.03
J38	2783367.274	411699.258	1.18
J39	2783366.105	411699.104	0.07
J40	2783366.038	411699.095	0.93
J41	2783365.949	411698.168	1.24
J42	2783348.713	411698.027	15.92
J43	2783348.898	411696.219	0.20
J44	2783348.698	411696.193	33.29
J45	2783315.768	411691.329	12.73
J46	2783303.173	411689.468	44.36
J47	2783259.287	411682.984	5.93
J48	2783253.420	411682.118	2.32
J49	2783251.135	411681.735	55.02
J50	2783196.875	411672.640	1.23
J51	2783195.662	411672.437	5.28
J52	2783190.457	411671.564	15.91
J53	2783174.765	411668.934	14.75
J54	2783160.218	411666.945	36.55
J55	2783123.931	411662.131	5.96
J56	2783118.030	411661.309	7.94
J57	2783110.174	411660.136	12.80
J58	2783097.490	411658.444	16.98
J59	2783080.671	411656.099	12.78
J60	2783068.014	411654.359	2.06
J61	2783065.972	411654.078	2.23
J62	2783063.772	411653.741	2.06
J63	2783061.740	411653.429	7.89
J64	2783053.946	411652.234	1.14
J65	2783052.823	411652.062	2.79
J66	2783050.048	411651.816	15.43
J67	2783034.621	411651.728	20.95
J68	2783013.670	411651.608	57.72
J69	2782955.949	411651.279	5.34
J70	2782950.634	411651.810	6.63
J71	2782944.034	411652.471	2.61
J72	2782941.443	411652.815	1.03
J73	2782940.416	411652.918	0.52
J74	2782939.908	411653.020	1.40
J75	2782938.515	411653.205	4.08
J76	2782934.516	411654.005	6.39
J77	2782928.248	411655.259	19.48

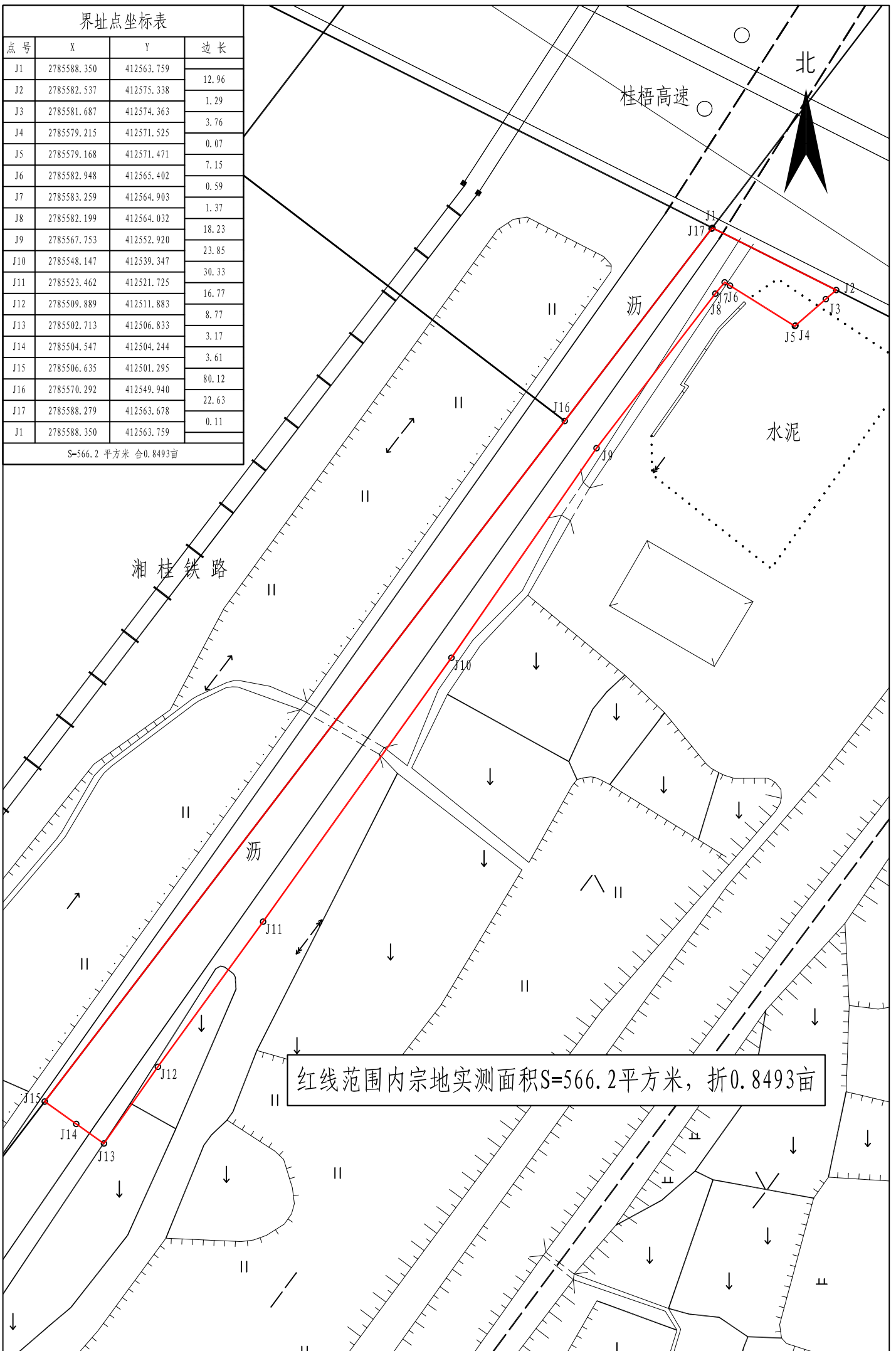
界址点坐标表

点号	X	Y	边长
J141	2782890.486	411655.384	5.95
J142	2782896.284	411654.068	10.26
J143	2782906.299	411651.831	4.71
J144	2782910.914	411650.889	20.23
J145	2782930.818	411647.303	20.23
J146	2782950.844	411644.470	20.23
J147	2782970.963	411642.395	14.96
J148	2782985.894	411641.423	2.70
J149	2782988.585	411641.248	2.57
J150	2782991.145	411641.081	20.23
J151	2783011.363	411640.529	20.12
J152	2783031.480	411640.739	0.11
J153	2783031.587	411640.740	34.34
J154	2783065.857	411642.978	6.06
J155	2783071.903	411643.373	20.15
J156	2783091.930	411645.597	20.11
J157	2783111.866	411648.256	20.07
J158	2783131.720	411651.220	10.04
J159	2783141.634	411652.795	10.00
J160	2783151.509	411654.364	20.00
J161	2783171.256	411657.565	20.00
J162	2783190.998	411660.769	2.05
J163	2783193.021	411661.098	5.98
J164	2783198.926	411662.056	11.97
J165	2783210.739	411663.973	20.00
J166	2783230.479	411667.176	19.97
J167	2783250.202	411670.322	4.23
J168	2783254.384	411670.970	15.74
J169	2783269.940	411673.381	19.97
J170	2783289.691	411676.352	19.97
J171	2783309.455	411679.236	19.97
J172	2783329.232	411682.031	19.97
J173	2783349.021	411684.739	15.97
J174	2783364.855	411686.834	4.00
J175	2783368.822	411687.359	19.97
J176	2783388.634	411689.890	19.97
J177	2783408.457	411692.334	9.94
J178	2783418.326	411693.506	10.04
J179	2783428.291	411694.689	19.97
J180	2783448.135	411696.956	19.97
J181	2783467.990	411699.135	19.97
J182	2783487.853	411701.226	19.97
J183	2783507.726	411703.228	39.98
J184	2783547.525	411707.050	20.00
J185	2783567.434	411708.951	20.00
J186	2783587.344	411710.852	20.00
J187	2783607.253	411712.754	20.00
J188	2783627.163	411714.655	40.00
J189	2783666.981	411718.458	20.00
J190	2783686.891	411720.360	20.00
J191	2783706.800	411722.261	20.00
J192	2783726.710	411724.163	9.62
J193	2783736.294	411725.008	7.36
J194	2783743.627	411725.655	2.92
J195	2783746.534	411725.912	19.89
J196	2783766.374	411727.293	19.89
J197	2783786.236	411728.304	3.08
J198	2783789.315	411728.404	10.78
J199	2783800.089	411728.751	3.53
J200	2783803.616	411728.865	2.50
J201	2783806.114	411728.946	4.16
J202	2783810.269	411729.002	13.40
J203	2783823.671	411729.185	2.33
J204	2783826.000	411729.217	19.89
J205	2783845.888	411729.118	19.89
J206	2783865.770	411728.649	13.36
J207	2783879.115	411728.126	6.57
J208	2783885.678	411727.828	20.00
J209	2783905.657	411726.920	20.00
J210	2783925.637	411726.012	20.00
J1	2783945.616	411725.104	7.38



界址点坐标表

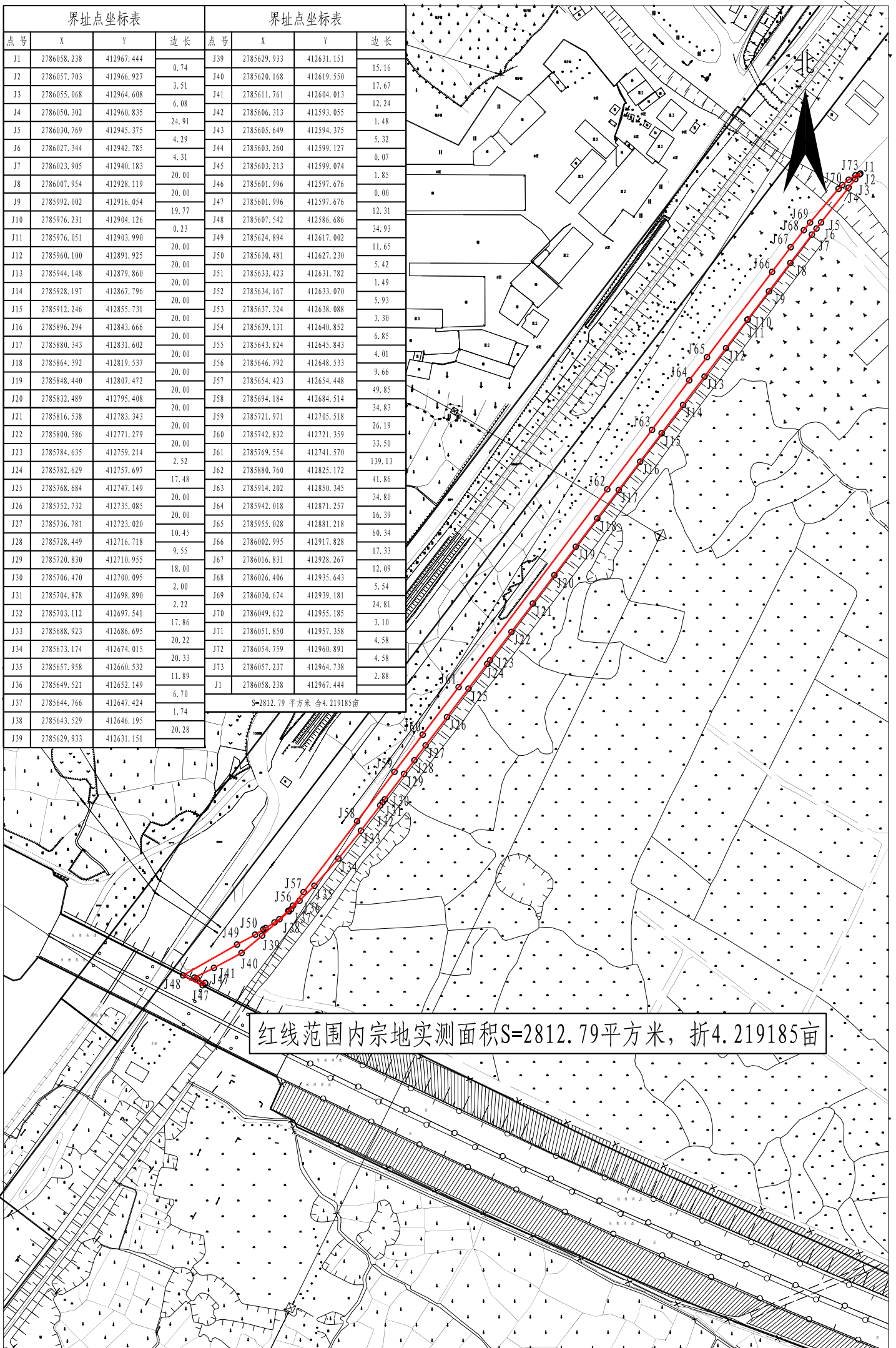
点号	X	Y	边长
J1	2785588.350	412563.759	12.96
J2	2785582.537	412575.338	1.29
J3	2785581.687	412574.363	3.76
J4	2785579.215	412571.525	0.07
J5	2785579.168	412571.471	7.15
J6	2785582.948	412565.402	0.59
J7	2785583.259	412564.903	1.37
J8	2785582.199	412564.032	18.23
J9	2785567.753	412552.920	23.85
J10	2785548.147	412539.347	30.33
J11	2785523.462	412521.725	16.77
J12	2785509.889	412511.883	8.77
J13	2785502.713	412506.833	3.17
J14	2785504.547	412504.244	3.61
J15	2785506.635	412501.295	80.12
J16	2785570.292	412549.940	22.63
J17	2785588.279	412563.678	0.11
J1	2785588.350	412563.759	
S=566.2 平方米 合0.8493亩			



红线范围内宗地实测面积S=566.2平方米，折0.8493亩

界址点坐标表				界址点坐标表			
点号	X	Y	边长	点号	X	Y	边长
J1	2786058.238	412967.444	0.74	J39	2785629.933	412631.151	15.16
J2	2786057.703	412966.927	3.51	J40	2785620.168	412619.550	17.67
J3	2786055.068	412964.608	6.08	J41	2785611.761	412604.013	12.24
J4	2786050.302	412960.835	24.91	J42	2785606.313	412593.055	1.48
J5	2786030.769	412945.375	4.29	J43	2785605.649	412594.375	5.32
J6	2786027.344	412942.785	4.31	J44	2785603.260	412599.127	0.07
J7	2786023.905	412940.183	20.00	J45	2785603.213	412599.074	1.85
J8	2786007.954	412928.119	20.00	J46	2785601.996	412597.676	0.00
J9	2785992.002	412916.054	19.77	J47	2785601.996	412597.676	12.31
J10	2785976.231	412904.126	0.23	J48	2785607.542	412586.686	34.93
J11	2785976.051	412903.990	20.00	J49	2785624.894	412617.002	11.65
J12	2785960.100	412891.925	20.00	J50	2785630.481	412627.230	5.42
J13	2785944.148	412879.860	20.00	J51	2785633.423	412631.782	1.49
J14	2785928.197	412867.796	20.00	J52	2785634.167	412633.070	5.93
J15	2785912.246	412855.731	20.00	J53	2785637.324	412638.088	3.30
J16	2785896.294	412843.666	20.00	J54	2785639.131	412640.852	6.85
J17	2785880.343	412831.602	20.00	J55	2785642.824	412645.843	4.01
J18	2785864.392	412819.537	20.00	J56	2785646.792	412648.533	9.66
J19	2785848.440	412807.472	20.00	J57	2785654.423	412654.448	49.85
J20	2785832.489	412795.408	20.00	J58	2785694.184	412684.514	34.83
J21	2785816.538	412783.343	20.00	J59	2785721.971	412705.518	26.19
J22	2785800.586	412771.279	20.00	J60	2785742.832	412721.359	33.50
J23	2785784.635	412759.214	2.52	J61	2785769.554	412741.570	139.13
J24	2785782.629	412757.697	17.48	J62	2785880.760	412825.172	41.86
J25	2785768.684	412747.149	20.00	J63	2785914.202	412850.345	34.80
J26	2785752.732	412735.085	20.00	J64	2785942.018	412871.257	16.39
J27	2785736.781	412723.020	10.45	J65	2785955.028	412881.218	60.34
J28	2785728.449	412716.718	9.55	J66	2786002.995	412917.828	17.33
J29	2785720.830	412710.955	18.00	J67	2786016.831	412928.267	12.09
J30	2785706.470	412700.095	2.00	J68	2786020.406	412935.643	5.54
J31	2785704.878	412698.890	2.22	J69	2786030.674	412939.181	24.81
J32	2785703.112	412697.541	17.86	J70	2786049.632	412955.185	3.10
J33	2785688.923	412686.695	20.22	J71	2786051.850	412957.358	4.58
J34	2785673.174	412674.015	20.33	J72	2786054.759	412960.891	4.58
J35	2785657.958	412660.532	11.89	J73	2786057.237	412964.738	2.88
J36	2785649.521	412652.149	6.70	J1	2786058.238	412967.444	
J37	2785644.766	412647.424	1.74				
J38	2785643.529	412646.195	20.28				
J39	2785629.933	412631.151					

S=2812.79 平方米 合4.219185亩



红线范围内宗地实测面积S=2812.79平方米，折4.219185亩



